

SCRUTINY BOARD (CHILDREN'S SERVICES)

Meeting to be held in Civic Hall, Leeds on
Thursday, 17th July, 2008 at 9.45 am

(A pre-meeting will take place for ALL Members of the Board at 9.15 a.m.)

MEMBERSHIP

Councillors

B Cleasby	-	Horsforth
G Driver	-	Middleton Park
J Elliott	-	Morley South
R D Feldman	-	Alwoodley
W Hyde (Chair)	-	Temple Newsam
B Lancaster	-	Moortown
J McKenna	-	Armley
V Morgan	-	Killingbeck and Seacroft
Whip's Nominee	-	Liberal Democrat Group
K Renshaw	-	Ardsley and Robin Hood
E Taylor	-	Chapel Allerton

Co-opted Members (Voting)

Mr E A Britten	-	Church Representative (Catholic)
Prof P H J H Gosden	-	Church Representative (Church of England)
Mr R Greaves	-	Parent Governor Representative (Secondary)
Mr I Falkingham	-	Parent Governor Representative (Special)
Mrs S Knights	-	Parent Governor Representative (Primary)

Co-opted Members (Non-Voting)

Mr T Hales	-	Teacher Representative
Ms C Foote	-	Teacher Representative
Mrs S Hutchinson	-	Early Years Development and Childcare Partnership
Ms J Morris-Boam	-	Leeds VOICE Children and Young People Services Forum Representative
Ms T Kayani	-	Leeds Youth Work Partnership Representative

Agenda compiled by:
Guy Close
Governance Services
Civic Hall
LEEDS LS1 1UR
Telephone: 247 4356

Principal Scrutiny Advisor:
Kate Arscott
Tel: 247 4189

A G E N D A

Item No	Ward/Equal Opportunities	Item Not Open		Page No
1			<p>APPEALS AGAINST REFUSAL OF INSPECTION OF DOCUMENTS</p> <p>To consider any appeals in accordance with Procedure Rule 25 of the Access to Information Rules (in the event of an Appeal the press and public will be excluded).</p> <p>(*In accordance with Procedure Rule 25, written notice of an appeal must be received by the Chief Democratic Services Officer at least 24 hours before the meeting)</p>	
2			<p>EXEMPT INFORMATION - POSSIBLE EXCLUSION OF THE PRESS AND PUBLIC</p> <p>1 To highlight reports or appendices which officers have identified as containing exempt information, and where officers consider that the public interest in maintaining the exemption outweighs the public interest in disclosing the information, for the reasons outlined in the report.</p> <p>2 To consider whether or not to accept the officers recommendation in respect of the above information.</p> <p>3 If so, to formally pass the following resolution:-</p> <p>RESOLVED – That the press and public be excluded from the meeting during consideration of the following parts of the agenda designated as containing exempt information on the grounds that it is likely, in view of the nature of the business to be transacted or the nature of the proceedings, that if members of the press and public were present there would be disclosure to them of exempt information, as follows:-</p> <p>No exempt items or information have been identified on this agenda.</p>	

Item No	Ward/Equal Opportunities	Item Not Open		Page No
3			LATE ITEMS To identify items which have been admitted to the agenda by the Chair for consideration. (The special circumstance shall be specified in the minutes.)	
4			DECLARATION OF INTERESTS To declare any personal/prejudicial interests for the purpose of Section 81(3) of the Local Government Act 2000 and paragraphs 8 to 12 of the Members' Code of Conduct.	
5			APOLOGIES FOR ABSENCE	
6			MINUTES OF LAST MEETING To confirm as a correct record the minutes of the meeting held on 26 th June, 2008.	1 - 6
7			INCLUSION STATEMENT - FORMAL RESPONSE To receive a report from the Head of Scrutiny and Member Development, which requests Members to consider responses to the Board's statement on inclusion.	7 - 26
8			RECOMMENDATION TRACKING To receive and consider a report from the Head of Scrutiny and Member Development, which requests Members to confirm the status of recommendations from previous inquiries.	27 - 44
9			CHILDREN AND YOUNG PEOPLE'S PLAN 2009: CONSULTATION PROCESS To receive and consider a report from the Head of Scrutiny and Member Development, which updates the Board on the development of the Children and Young People's Plan 2009-2014.	45 - 56

Item No	Ward/Equal Opportunities	Item Not Open		Page No
10			WORK PROGRAMME To receive a report from the Head of Scrutiny and Member Development, which outlines the Scrutiny Board's work programme for the remainder of the current municipal year.	57 - 64
11			DATE AND TIME OF NEXT MEETING To note that the next meeting of the Board will be held on 18 th September, 2008 at 9.45 am with a pre-meeting for Board Members at 9.15 am.	

Agenda Item 6

SCRUTINY BOARD (CHILDREN'S SERVICES)

THURSDAY, 26TH JUNE, 2008

PRESENT: Councillor W Hyde in the Chair

Councillors B Cleasby, G Driver, R D Feldman,
J McKenna, K Renshaw and E Taylor

CO-OPTED MEMBERS (VOTING):

Mr E A Britten	- Church Representative (Catholic)
Mr I Falkingham	- Parent Governor Representative (Special)
Prof P H J H Gosden	- Church Representative (Church of England)
Mrs S Knights	- Parent Governor Representative (Primary)

CO-OPTED MEMBERS (NON-VOTING):

Ms C Foote	- Teacher Representative
Mrs S Hutchinson	- Early Years Development & Childcare Partnership Representative
Ms J Morris-Boam	- Leeds Voice Children and Young People Services Forum Representative
Ms T Kayani	- Leeds Youth Work Partnership

1 Chair's Opening Remarks

The Chair welcomed all in attendance to the first Scrutiny Board (Children's Services) meeting of the municipal year 2008/09.

2 Declaration of Interests

There were no declarations at this point, however declarations were made at later points in the meeting (Minute Nos. 6 and 7 refer).

3 Apologies for absence

Apologies for absence were submitted by Councillors J Elliott, B Lancaster and V Morgan and by Mr R Greaves and Mr T Hales.

4 Minutes of Last Meeting

RESOLVED – That the minutes of the meeting held on 24th April, 2008 be confirmed as a correct record.

5 Co-options to the Board

Draft minutes to be approved at the meeting
to be held on Thursday, 17th July, 2008

The Board received a report from the Head of Scrutiny and Member Development, which sought Members' approval for co-options to the Scrutiny Board.

Members noted that Article 6 of the Council's Constitution required the Scrutiny Board (Children's Services) to include both a Church of England and a Roman Catholic diocesan representative, together with three parent governor representatives as voting co-opted members of the Board.

Members also noted that each Scrutiny Board was permitted to appoint up to five non-voting co-opted members for the duration of the current municipal year. In addition, each Scrutiny Board could appoint up to two non-voting co-opted Members to assist with a particular scrutiny Inquiry.

The Chair highlighted the co-opted Members' significant contribution to the Board's work.

Members discussed the possibility of co-opting a young person onto the Board. They were advised that there was already an established Young Person's Scrutiny Forum. The Principal Scrutiny Adviser pointed out that it would be difficult for a young person involved in full-time education to attend Scrutiny Board meetings as currently scheduled. Members were reminded that the Board currently had a full quota of co-opted Members.

RESOLVED –

(a) That the re-appointment of Professor P H J H Gosden (Church Representative - Church of England) and Mr E A Britten (Church Representative - Roman Catholic) as voting co-opted members of the Board for 2008/09 be confirmed;

(b) That the continued appointment of Mr R Greaves (Parent Governor Representative - Secondary), Mr I Falkingham (Parent Governor Representative - Special) and Mrs S Knights (Parent Governor Representative - Primary) be noted;

(c) That Mr T Hales and Ms C Foote (Teacher Representatives), Mrs S Hutchinson (Early Years Development and Childcare Partnership Representative), Ms T Kayani (Youth Work Partnership Representative) and Ms J Morris-Boam (Leeds VOICE Children and Young People Services Forum Representative) be appointed as non-voting co-opted members of the Board for 2008/09;

(d) That the option to co-opt a further two individuals for the duration of specific inquiries be noted; and

(e) That the Principal Scrutiny Adviser report back on the possibility of co-opting a young person onto the Board.

6 Input to the Work Programme 2008/09 - Sources of Work and Establishing the Board's Priorities

The Head of Scrutiny and Member Development submitted a report, which provided information and guidance to assist the Board with developing its work programme for 2008/09.

A range of core information relevant to the Board's responsibilities was attached to the report to assist Members with identifying priorities for the coming year's work programme.

Councillor R Harker, Executive Member (Learning), Keith Burton, Deputy Director - Children's Services, John Maynard, Strategic Leader - Children's Services and Dirk Gilleard, Deputy Chief Executive - Education Leeds, were all in attendance.

The Executive Member (Learning) thanked the Board for the work undertaken in 2007/08. It was reported that the authority was currently involved with a range of activities aimed at improving Children's Services.

The Deputy Director, Children's Services, provided the Board with an overview of the range of issues currently facing the Children's Services portfolio in Leeds.

The main highlighted points were:-

Strategy and Development

- Child poverty with a focus on Early Years Health Inequalities was high on the Government agenda.
- The 'Think Family' approach would involve joint working with Adult Social Services.
- The future of social care - focus was on prevention work, linked with 'Beyond Care Matters' and the changing role of social workers.
- The Education and Skills Bill - new powers to be introduced and changing role for the local authority.
- New Migrant Families - supporting young people to make transition with particular focus on vulnerable and under-performing groups.

Challenge

- Development of performance management, particularly focusing on high risk areas, including; young people not in education, employment or training (NEET), teenage pregnancy, attendance and roll out of 14-19 provision.

High Public Interest

- Primary Capital Programme - changes planned for primary infrastructure.
- Transport - emphasis on role of extended services and value for money.

Draft minutes to be approved at the meeting
to be held on Thursday, 17th July, 2008

- Persistent absence - improving attendance by encouraging greater parental involvement.

Continuous Monitoring

- Children and Young People's Plan (CYPP) Review - draft review expected in January 2009.
- Internal Audit processes - outcomes arising from Inquiries into Services for 8-13 year olds and Education Standards.

Questions and comments were then invited and the main areas of discussion were:-

- How schools and families were being prepared for forthcoming changes to the benefits system.
- Various aspects of secondary and post-16 education and training.
- The Board discussed the possibility of undertaking an Inquiry in relation to teenage conceptions. The Chair advised that a working group had been set-up last year, which had recommended further work.
- The Board also discussed the Youth Service and data quality issues. The Board requested a copy of the action plan to address this problem.

The Chair then thanked the Executive Member (Learning) and officers for their attendance at the meeting.

RESOLVED – That the report and information appended to the report be noted.

(Councillor K Renshaw declared a personal interest in this item due to being a Governor of Rodillian High School, Seven Hills Primary School and East Ardsley Primary School and also due to her employment as a Nursery Nurse.)

7 Determining the Work Programme for 2008/09

The Head of Scrutiny and Member Development submitted a report to assist the Board with determining its work programme for 2008/09.

Appended to the report was the inquiry selection criteria and an outline work programme.

Having considered the information detailed within agenda item 8, and having discussed relevant issues with the Executive Member (Learning) and Deputy Director, Children's Services, the Board was invited to consider formulating a draft work programme.

In brief summary, the main highlighted points were:-

- Members discussed receiving a summary of the work that had been undertaken to assist the Board with formulating its work programme.

- One Member suggested that some key areas could be linked together, e.g. young people's access to diplomas and reducing NEET.
- The Board considered looking into the role of voluntary and community sector providers and extended services clusters.
- One Member referred to the review of 14-19 provision. It was suggested that further work could be undertaken, focussing on young people with additional needs.

(Ms T Kayani declared a personal interest in this item as Chief Executive of a voluntary sector organisation.)

RESOLVED – That the Board's Principal Scrutiny Adviser be requested to update and timetable the Board's work programme for 2008/09.

8 Dates of Future Meetings

RESOLVED – That the following dates be noted and approved:-

- Thursday 17th July, 2008
- Thursday 18th September, 2008
- Thursday 16th October, 2008
- Thursday 13th November, 2008
- Thursday 11th December, 2008
- Thursday 8th January, 2009
- Thursday 5th February, 2009
- Thursday 5th March, 2009
- Thursday 2nd April, 2009.

(The meeting concluded at 11.45 am.)

This page is intentionally left blank

Report of the Head of Scrutiny and Member Development

Scrutiny Board (Children's Services)

Date: 17 July 2008

Subject: Inclusion Statement - Formal Response

Electoral Wards Affected:

Specific Implications For:

Equality and Diversity ☐

Community Cohesion ☐

Narrowing the Gap ☐

1.0 Introduction

- 1.1 During 2007/2008, the Scrutiny Board (Children's Services) set up a working group on inclusion. The board issued a statement setting out its conclusions and recommendations in April 2008.
- 1.2 It is the normal practice to request a formal response from departments to the board's recommendations, once a statement has been issued.
- 1.3 A formal response to the statement has now been received. This is attached as appendix 1.
- 1.4 Members are asked to consider the responses provided, and to decide whether any further scrutiny involvement is required.
- 1.5 Any recommendations which have not yet been completed will be included in future quarterly recommendation tracking reports to enable the Board to continue to monitor progress.

2.0 Recommendation

- 2.1 Members are asked to consider the responses provided and to decide whether further scrutiny involvement is required.

This page is intentionally left blank

Statement of

Scrutiny Board
(Children's Services)

Inclusion

Introduction



Introduction

1. At its meeting in October 2007, the Scrutiny Board (Children's Services) considered the draft Leeds Inclusive Learning Strategy.
2. The revised Inclusive Learning Strategy is a Children Leeds strategy, and whilst its initial focus is on education, the aim is to develop more multi-disciplinary working.
3. Having considered the draft Strategy, the Board appointed a working group to give more detailed consideration to two of the strategic objectives outlined in the strategy:
 - the further development of specialist provision, including the role of the SILCs;
 - the further development of the behaviour continuum and provision, including the role of the pupil referral units.
4. The working group was also commissioned by the Board to review progress in implementing the recommendations made by the Scrutiny Board (Children's Services) in April 2006 arising from its inquiry into Specialist Inclusive Learning Centres (SILCs).
5. The working group met on three occasions: 5th December 2007, 27th January and 6th March 2008.
6. Following presentation of the working group's findings to the full Scrutiny Board, the Board has agreed the following statement and recommendations.

Comments and Recommendations



SILCs

1. At the first meeting of the working group the focus was on strategic objective 2 of the Inclusive Learning Strategy: the further development of specialist provision, including the role of the SILCs.
2. Members considered the project brief and action plans for this objective of the strategy.
3. This objective will seek to bring greater coherence and consistency to the roles of the various types of provision – ie mainstream school, resourced provision, SILC partnerships, SILCs – so that there is a clear continuum of provision to meet varying levels of need.
4. Members flagged parental participation as an ongoing concern, even whilst acknowledging the positive progress and activity that has taken place, particularly recently.
5. In particular, parental perception about the amount of choice parents have with regard to a SILC or mainstream placement for their child remains an issue for some parents. A key factor here is the requirement for a statement in order to access a SILC place.
6. Officers repeated a request for Members of the Scrutiny Board to encourage individual parents who approached them with concerns about inappropriate placements to contact Education Leeds, in order that they could fulfil their duty to investigate these cases.
7. This led on to another concern of the working group – regarding the appropriate use of special educational needs (SEN) funding through the Funding for Inclusion (FFI) scheme, by some mainstream schools. Funding for pupils' special educational needs in mainstream schools is delegated to schools, and the management and governing body will then determine how it is spent at their discretion.
8. Members were very pleased to hear that closer monitoring of how schools spend resources allocated to them for SEN provision is being incorporated into Education Leeds' school improvement teams and School Improvement Partners' monitoring and challenge of

Some parents apparently still feel pressured to accept a mainstream placement, yet they may have reservations about the local mainstream schools' capacity to meet their child's additional needs.

Comments and Recommendations



schools, on an outcome focused basis. This is part of a stronger inclusion focus in this relationship.

Recommendation 1

That Education Leeds report quarterly to the Scrutiny Board (Children's Services) on any concerns regarding schools' use of delegated SEN funding raised through the school improvement process, and how schools have responded to challenge.

9. Outreach was felt to be another key area for development, in order to use existing expertise from SILCs and partnership schools to support mainstream schools to increase their ability to meet the needs of SEN pupils well. The Working Group agreed that further developing the expertise of mainstream schools is still a key issue in making mainstream school a realistic option for more parents.
10. Some members of the working group also maintain concerns that, where some mainstream schools rely extensively on Teaching Assistants and Higher Level Teaching Assistants to provide support for these pupils, then there is not enough pedagogical input for these children and that they may not achieve their full educational potential as a result. This was not felt to be a widespread

problem, but was a significant factor for those small number of pupils struggling to cope.

11. Whilst it will take some time to deliver the objectives of the Inclusive Learning Strategy, the working group was reminded that recent Ofsted inspections had judged existing SILC provision to be good or outstanding. Existing pupils were benefiting from ongoing improvements and developments at the same time as the longer term plans were being progressed.
12. Officers also informed the working group that the review of provision as part of this objective acknowledged the need for specialist SEN provision to be available in each area of the city, although in some cases that may not be in the current location(s).
13. In particular, the various school building programmes offered opportunities, such as the development at Temple Moor with the East SILC.

Recommendation 2

That Education Leeds commits to early consultation with parents and professionals on any proposals for changes in the location of specialist SEN provision.

Comments and Recommendations



Emotional and Social Difficulties) SILC provision.

Behaviour

14. The second meeting of the working group focused on the third objective of the Leeds Inclusive Learning Strategy – the further development of the behaviour continuum and provision, including the role of the pupil referral units. The Board's particular interest in this objective was sparked by concerns raised in spring 2007, when the Board received a briefing on the No Child Left Behind initiative and the Area Management Board arrangements.
15. At that time, members had noted the governance and joint working arrangements being put in place, but asked for further evidence of additional support on the ground to assist staff in schools to tackle behaviour issues on a day to day basis, especially at the lower end of the continuum.
16. The working group received a presentation on the development of a new model for the behaviour continuum, which demonstrates how provision would be delivered in each wedge of the city, providing a range of levels of support from assistance in schools through to a centralised BESD (Behaviour,
17. A diagram of the model and a description of the provision planned for each Key Stage is appended to this report.
18. Although this hub and spoke model is still subject to consultation, some parts of it are already being developed, for example the Oasis centres. If fully implemented, it will increase the availability of local behaviour provision, particularly at an 'intermediate' level.
19. The working group discussed the geographical distribution of current provision, and in particular the impact on travelling times for pupils, and the cost of transport. For example members noted that approximately £120k of the £400k budget for the Oakwood site was spent on taxi fares.
20. It is anticipated that one of the benefits of the new model will be that transport costs will reduce, with more money available to spend directly on provision.
21. Members stressed the importance of the new provision developing the notion of a 'revolving door' so that pupils returned to mainstream provision as soon as possible,

Comments and Recommendations



and other 'at risk' pupils are able to benefit from support. This is key to resolving historical perceptions of blockages in the system.

22. The working group asked if there was any evidence or case studies relating to the number of young people 'saved' from exclusion by intermediate interventions such as alternative programmes. There should be a system of tracking and monitoring the success of the various interventions across the whole behaviour continuum as part of the increased drive for accountability in this area.

Recommendation 3

That Education Leeds reports to the Scrutiny Board on how it will monitor the success of different behaviour interventions across the whole continuum in achieving outcomes for pupils (including mainstream schools, alternative provision, partnership provision, resourced provision, Area Management Board provision, Pupil Development Centres, Learning Support Units, Oasis provision, Teaching and Learning Centres, Pupil Referral Units and SILC provision).

23. In terms of staff development, the working group discussed some of the keys to success. In particular, siting new provision

in excellent schools was a deliberate strategy. Education Leeds was also exploring the potential for mainstream staff to be seconded to behaviour provision to develop their expertise.

24. Members talked about issues around transition from primary to secondary school. They suggested the need to identify vulnerable pupils who have not quite required outside placements in primary school, but for whom the disruption of transfer to secondary school is liable to trigger such a need. Primary schools identifying such pupils and alerting secondary schools was part of a preventative strategy, but it was also hoped that the new Oasis centres would help meet this type of need.

25. Members asked about the referral routes for the Oasis provision, which will take the form of eight place provision which pupils will typically attend for half a term, whilst maintaining regular contact and part-time attendance at their existing mainstream school. The working group was told that it was expected that the referral route would be via schools, against locally set criteria. It was not anticipated that parents would be able to refer a child, although if a school refused to

Comments and Recommendations



refer a child the parent would of course have recourse to normal routes to pursue any complaint, including through the governing body or the Parent Partnership Service.

26. The working group advised that it was important that referral routes need to be set out clearly from the outset, as it was circumstances such as this which could create tensions with parents when they felt that the system was failing them.

Recommendation 4

That Education Leeds clearly sets out the referral routes for the Oasis centres.

27. The working group discussed with officers the progress that was being made in establishing an ongoing dialogue with parents, both collectively and individually. It was recognised that on the whole communication had improved significantly, but members stressed that the positive work on this issue needed to be maintained through continued efforts in order to overcome some of the deep-seated history of parental suspicion.

28. The working group was also very interested to discover how the changing pattern of school provision – ie the establishment

of Academies and Trusts – impacted on behaviour issues.

29. Aspects discussed included:

- Exclusions
- Exemptions from admitting pupils excluded from other schools
- Admissions policies and the knock-on impact on the intake of other local schools
- Different trigger levels for exclusion
- Different financial rules – funding does not follow the excluded pupil in the case of the Academy.

Recommendation 5

That Education Leeds continues to lobby the DCSF to ensure that the establishment of future Academies, especially in Leeds, provides for funding to follow an excluded pupil.

30. Members were pleased to hear from officers of the work that had been done to develop relationships between Education Leeds and the David Young Community Academy, as well as other local schools, and of the success of this work so far. It was helpful to be able to discuss these issues with officers, following the attendance of the Academy Principal at the Scrutiny Board the previous week.

Comments and Recommendations



31. Some of the lessons learned were being built into the draft protocols for any future Academies and partnerships in Leeds, as an expression of the local authority's ethos and commitment to schools working collaboratively. This is an issue that the Scrutiny Board has stressed continuously throughout its work, and particularly in its inquiry last year on the implications of trust schools for the local authority.

32. The working group also noted that the change to Trust status in Garforth had not resulted in any changes in access to provision to date.

Scrutiny Inquiry on SILCs

33. The working group was also tasked by the Scrutiny Board with tracking progress in implementing the recommendations of the original SILCs inquiry, which reported in April 2006.

34. When the SILCs inquiry report was originally produced, it had been anticipated that a review of the SEN policy, including accommodation and funding was imminent.

35. Members were clear in their inquiry report that *"We also need to recognise that our inquiry took place at a particular*

moment in time, and our findings will reflect that fact."

36. Eighteen months on from the original scrutiny inquiry, the publication of the refreshed Leeds Inclusive Learning Strategy meant that there was a need to revisit these findings and take stock of progress. Accordingly, the working group considered an update on each of the recommendations, relating them to the Leeds Inclusive Learning Strategy.

37. In order to reflect the new approach outlined in the Inclusive Learning Strategy, it is agreed that it is no longer appropriate to monitor the recommendations as they were originally written in 2006.

38. Instead the working group has considered how the new approach outlined in the new Strategy reflects the spirit of the Board's previous inquiry and recommended to the Board that implementation of the four strategic objectives contained in the Leeds Inclusive Learning Strategy should form the key focus for ongoing monitoring.

39. The Scrutiny Board has agreed that this will form the basis for the next stage of its involvement in the development of inclusive practice.

Comments and Recommendations



Recommendation 6

That Education Leeds and the Principal Scrutiny Adviser devise an appropriate framework for the Scrutiny Board to monitor implementation of the Leeds Inclusive Learning Strategy during 2008/09.

Participants



Members of the Working Group

Councillor W Hyde
Councillor J Langdale
Mr E A Britten
Mr I Falkingham
Ms C Foote
Mrs S Knights
Prof P Gosden

Witnesses

Carol Jordan – Strategic Manager for Integrated Children’s Services, Education Leeds
John Fryett – North West Leeds Area Management Board Inclusion Project Director, Education Leeds
Andrew Hobbs – Change Consultant, Education Leeds
Sue Morgan – Inclusion and SEN Development Officer, Education Leeds
Liz Lowes – Change Coordinator, Education Leeds
Gary Nixon – Head of Service, Education Leeds
Diane Reynard - Principal of the East SILC
Bob Stott – No Child Left Behind Project Director, Education Leeds

1. At Key Stages 1&2, the following behaviour continuum is envisaged:

Universal	Universal	Targeted	Targeted	Targeted	Specialist
Primary schools	Nurture provision	Pupil Development Centres (PDC)	Oasis provision	KS2 Pupil Referral Unit (PRU)	KS2 SILC

2. At Key Stage 3, the following behaviour continuum is envisaged:

Universal	Universal	Targeted	Targeted	Targeted	Specialist
Secondary schools	Learning Mentors	Learning Support Units (LSU)	Learning Centres	KS3 PRU	KS3 BESD SILC

3. At Key Stage 4, the following behaviour continuum is envisaged:

Universal	Universal	Targeted	Targeted	Targeted	Specialist
Secondary schools	Learning Mentors	LSUs	Learning Centres	Alternative Provision	KS4 BESD SILC

Inclusive Learning Strategy **Action Plan in Response to Scrutiny Inquiry Report April 2008**

Recommendations	Actions proposed	Responsibility	Timescale	Progress
<p>Recommendation 1</p> <p>That Education Leeds report quarterly to the Scrutiny Board (Children's Services) on any concerns regarding schools' use of delegated SEN funding raised through the school improvement process, and how schools have responded to challenge.</p>	<p>Education Leeds are developing a monitoring and accountability framework that will include value for money judgements, against pupil outcomes and organisational practice.</p> <p>Working in partnership with schools, a document will be produced that sets out the full range of resources available to support children with SEN, with clear guidance as to how these resources can be utilised.</p> <p>An improved data set for Inclusion that will include both funding and outcomes for children will enable improved support and challenge mechanisms within which judgements can be made.</p>	<p>Gary Nixon</p>	<p>By July 2009</p>	<p><i>An officer within the Performance and Management Information Team (PMIT) has been identified to progress the data work.</i></p> <p><i>The recently established SEN, Statutory Assessment and Provision Team (SENSAP) will have this as a key focus of their work over the next 12 months.</i></p>

Recommendations	Actions proposed	Responsibility	Timescale	Progress
<p>Recommendation 2</p> <p>That Education Leeds commits to early consultation with parents and professionals on any proposals for changes in the location of specialist SEN provision.</p>	<p>The development of Specialist Provision, including the SILCs is Objective 2 within the Leeds Inclusive Learning Strategy (LILs).</p> <p>An audit of current and future projections of the SEN population are informing the development of a range of provisions within localities to ensure improved pathways for children.</p> <p>Proposals for the development of specialist provision will be consulted on with a wide range of stakeholders including parents.</p>	<p>Gary Nixon</p>	<p>By December 2008</p>	<p><i>The audit is now well under way. SENSAP is working collaboratively with PMIT and School Organisation to ensure that the data set upon which the model is based is as accurate and detailed as possible. Agreement has been reached with SILC Principals regarding the options for a future model for specialist provision. A briefing document as a precursor to a consultative document is currently being prepared. It is planned that this will be available by the end of July 2008.</i></p>

Recommendations	Actions proposed	Responsibility	Timescale	Progress
Recommendation 3 That Education Leeds reports to the Scrutiny Board on how it will monitor the success of different behaviour interventions across the whole continuum in achieving outcomes for pupils (including mainstream schools, alternative provision, partnership provision, resourced provision, Area Management Board provision, Pupil Development Centres, Learning Support Units, Oasis provision, Teaching and Learning Centres, Pupil Referral Units and SILC provision).	<p>Education Leeds as purchaser will prepare a service specification outlining the outcomes across the behaviour continuum that it expects the Area Management Boards (AMBs) as providers to impact upon. On the basis of this both parties will agree a service level agreement (SLA) with the AMBs relating to the monies delegated to the AMBs.</p> <p>Revised PRU management committee will receive regular reports on all pupil referral units and outcomes for pupils educated there.</p> <p>Governing bodies of individual SILCS will continue to monitor outcomes for their pupils and receive external evaluation from School Improvement Partners.</p> <p>The SEN, Statutory Assessment and Provision Team will monitor all the statutory functions of the local authority relating to SEN functions and priorities.</p>	<p>Bob Stott Philip Robson</p> <p>Wendy Winterburn</p> <p>Governing Bodies</p> <p>Gary Nixon</p>	<p>By October 2008</p> <p>By May 2008</p> <p>Ongoing</p> <p>Ongoing</p>	<p><i>Meetings to finalise service specification are fixed for July 2008. Discussions over SLA will be finalised with AMBs during September.</i></p> <p><i>Revised PRU management committee is constituted and meeting on a regular basis</i></p> <p><i>The collection and evaluation of progress data from SILCs, including P Scales and PIVATs, is in place. The submission of P level data is now a statutory requirement by the DCSF.</i></p> <p><i>The Local Authority is introducing measures to ensure they comply with the new Planning and Developing Special Education Provision Guidance (DCSF).</i></p>

Recommendations	Actions proposed	Responsibility	Timescale	Progress
Recommendation 4 That Education Leeds clearly sets out the referral routes for the Oasis centres.	Referral routes into Oasis Provision will be contained as an appendix to the SLA with Area Management Boards outlined in recommendation 3.	Bob Stott Philip Robson	October 2008	Meetings to finalise service specification are fixed for July 2008. Discussions over SLA will be finalised with AMBs during September.
Recommendation 5 That Education Leeds continues to lobby the DCSF to ensure that the establishment of future Academies, especially in Leeds, provides for funding to follow an excluded pupil.	Education Leeds has responded to consultation from the DCSF stressing the importance of the inclusion of academies in regard to in Year Fair Access arrangements and around locally determined financial adjustments for exclusion.	Simon Darby	March 2008	<p>The DCS has proposed that budget adjustments should apply to academies from 1 April 2009. Two options are proposed:</p> <ol style="list-style-type: none"> 1. All Academies will be subject to statutory adjustment. 2. Academies will be subject to statutory adjustment and additional local adjustment if they have representation on schools forum. <p>Further guidance will be published in autumn 2008.</p>

Recommendations	Actions proposed	Responsibility	Timescale	Progress
Recommendation 6 That Education Leeds and the Principal Scrutiny Adviser devise an appropriate framework for the Scrutiny Board to monitor implementation of the Leeds Inclusive Learning Strategy during 2008/09.	<p>A Programme Board has been established that meets regularly to monitor, evaluate and provide strategic direction regarding the progress of LILs.</p> <p>Updates to Scrutiny Board will be provided as appropriate following decision outcomes directed by the Board.</p> <p>These will be incorporated into the Board's quarterly overview and performance monitoring cycle.</p>	Carol Jordan	2008-2009	<i>The Programme Board has been operating over the last twelve months. Following evaluation it has been agreed to widen the membership of the Board to include key partners and to ensure synergy in decision making processes with the 14+ agenda and the developing disability strategy.</i>

This page is intentionally left blank

Report of the Head of Scrutiny and Member Development

Scrutiny Board (Children's Services)

Date: 17 July 2008

Subject: Recommendation Tracking

Electoral Wards Affected:

Specific Implications For:

Equality and Diversity ☐

Community Cohesion ☐

Narrowing the Gap ☐

1.0 Introduction

- 1.1 Last year Overview and Scrutiny Committee agreed to adopt a new, more formal system of recommendation tracking, to ensure that scrutiny recommendations were more rigorously followed through.
- 1.2 As a result, each Scrutiny Board now receives a quarterly report on any recommendations from previous inquiries which have not yet been completed.
- 1.3 This will allow the board to monitor progress and identify completed recommendations; those progressing to plan; and those where there is either an obstacle or progress is not adequate. The board will then be able to take further action as appropriate.
- 1.4 A standard set of criteria has been produced, to enable the board to assess progress. These are presented in the form of a flow chart at Appendix 1. The questions should help to decide whether a recommendation has been completed, and if not whether further action is required.
- 1.5 For each outstanding recommendation, a progress update is provided. In some cases there will be several updates, as the board has monitored progress over a period of time.
- 1.6 To assist members, the Principal Scrutiny Adviser has given a draft status for each recommendation. The board is asked to confirm whether these assessments are appropriate, and to change them where they are not.

- 1.7 In particular, members should note that a number of recommendations have a draft status of 4 or 5. For these recommendations, the Principal Scrutiny Adviser suggests that progress has been made. However, the decision as to whether this progress is acceptable is a judgement for board members to make.
- 1.8 In deciding whether to undertake any further work, members will need to consider the balance of the board's work programme.

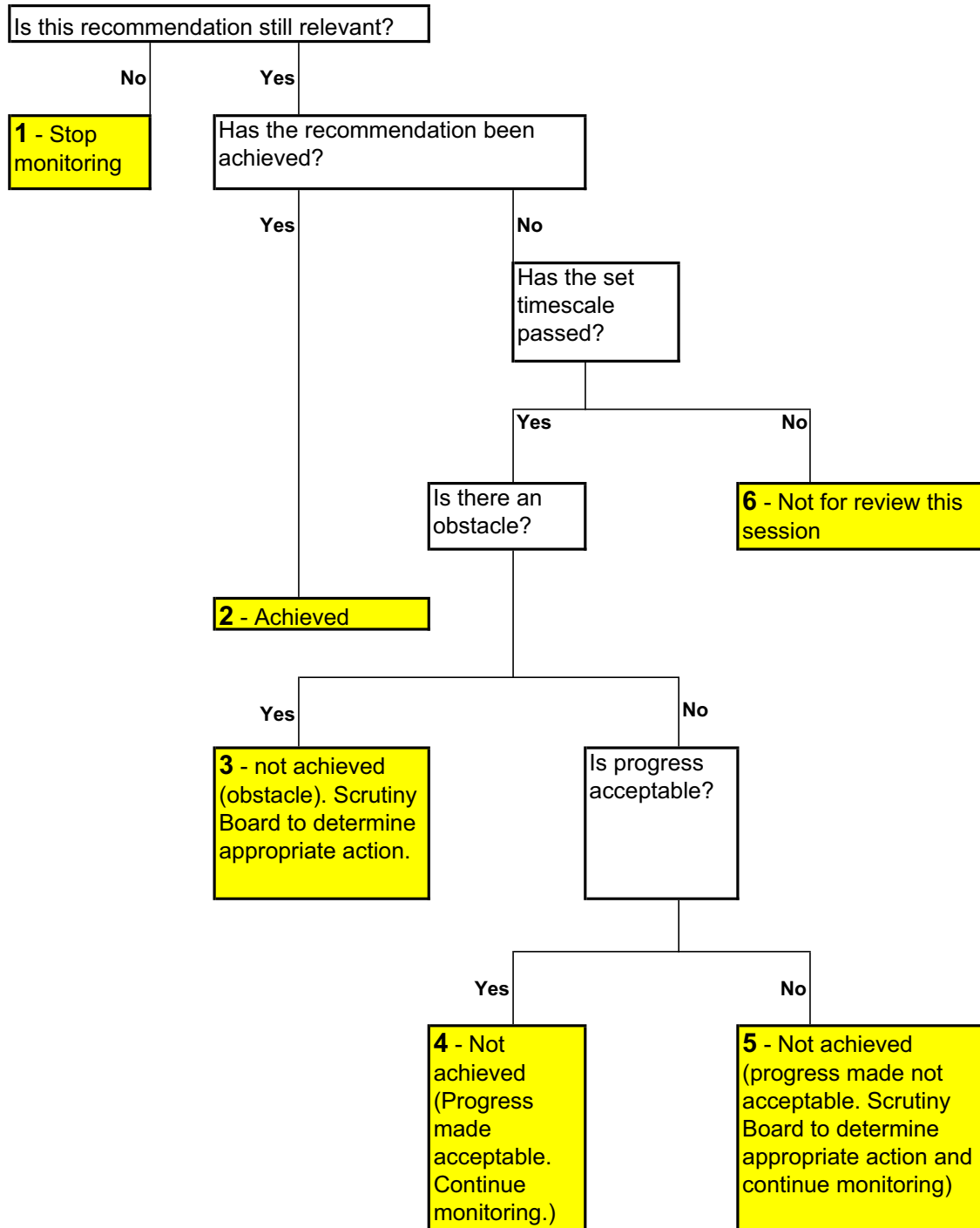
2.0 Next Steps

- 2.1 The next cycle of quarterly recommendation tracking reports will be presented to Scrutiny Boards in October 2008, enabling the Board to judge progress against outstanding recommendations.
- 2.2 Elsewhere on this agenda, the board is considering a formal response to the statement on Inclusion, published in April 2008. Any recommendations which require ongoing action will be added to this report for the next cycle of recommendation tracking.

3.0 Recommendations

- 3.1 Members are asked to:
- Agree those recommendations which no longer require monitoring;
 - Identify any recommendations where progress is unsatisfactory and determine the action the board wishes to take as a result.

Recommendation tracking flowchart and classifications:
Questions to be Considered by Scrutiny Boards



This page is intentionally left blank

	Recommendation	Where we are up to	Stage	Complete
2	We recommend that the Director of Social Services reports back to us within three months on action that will be taken to reduce administrative delays in the adoption process	<p><u>July 2007 position</u> Recommendations for administrative support to the Fostering & Adoption Service will arise out of the full review of the service Timescale: October 2007 <u>October 2007 update</u> The timescale for the review to be completed is now January 2008. An additional temporary post has been agreed in the interim. <u>January 2008 update</u> The timescale for completion of the review is now March 2008.</p> <p>July 2008 Update In order to achieve this recommendation there is now a dedicated adoption panel co-ordinator. A new head of support services reviewed processes, streamlined administration and is working with the Electronic Social Care Record (ESCR) team to implement electronic record keeping.</p>	2 (Achieved)	✓
3	We recommend that the Director of Social Services considers whether a similar organisational approach to that taken in Liverpool would benefit adoption in Leeds, and reports back to us with a view within three months	<p><u>July 2007 position</u> This proposal will be considered as part of the full review of the service as it represents a significant change to current practice and has budgetary implications Timescale: October 2007 <u>October 2007 update</u> The timescale for the review to be completed is now January 2008. <u>January 2008 update</u> The timescale for completion of the review is now March 2008.</p> <p>July 2008 Update The Liverpool model has been considered and rejected on the basis that the benefits from that approach can be achieved by other means in Leeds. Specifically, Leeds has instead invested in 3 additional fostering officers to help shorten the timescale for assessments – a key priority for the service.</p>	2 (Achieved)	✓

	Recommendation	Where we are up to	Stage	Complete
9	We recommend that the Director of Social Services commissions appropriate activity to raise general awareness of the range of people who can adopt children and reports back to us on initiatives proposed within three months	<p><u>July 2007 position</u> Consideration will be given to increasing the recruitment budget. The current budget has not been increased for several years and is probably insufficient. The service review will report on this and make recommendations. Timescale: April 2008</p> <p>Continue current involvement with the Adoption Consortium on raising awareness about adoption at a regional level particularly about BME children needing adoption</p> <p><u>October 2007 update</u> A regional approach to the recruitment of BME adopters and awareness raising is now taking place.</p> <p><u>July 2008 update</u> A recruitment strategy is in place to guide work on raising awareness around adoptions; this advocates work both locally and regionally.</p> <p>Further to the July 2007 position, the local recruitment budget has not been increased. However there has been greater investment in engaging with the regional consortium to raise the profile of adopting Leeds children across the region, which brings net gains for the city.</p> <p>Some specific examples of recent positive recruitment activity include:</p> <ul style="list-style-type: none"> - Adoption week in November 2007 - Two National Adoption Register exchange days to bring agencies together to profile those needing adoption to target our efforts to where they are needed most; - A range of targeted local activity including a Beeston mailout; Chapeltown Carnival; - Extending the website to link with national adoption agencies. 	2 (Achieved)	✓

	Recommendation	Where we are up to	Stage	Complete
12	We recommend that the Director of Children's Services considers the appointment of an independent reviewing officer for adoption, and reports back to us with a view within three months	<p><u>July 2007 position</u> The manager of the Independent Reviewing Officers will consider this proposal and make recommendations. Timescale: July 2007</p> <p><u>October 2007 update</u> A review of the reviewing service is underway and the manager has been made aware of this proposal.</p> <p><u>January 2008 update</u> This issue is being looked at as part of the general review and restructuring of the adoption and fostering section and is not due to be complete until the end of March.</p> <p><u>July 2008 Update</u> An independent reviewing officer for adoptions has been considered, but it has not been introduced. This is based on two key factors:</p> <ul style="list-style-type: none"> - the view from the existing team that introducing an independent reviewing officer part way through the adoption process would potentially mean losing the knowledge and continuity established through the early stages of cases. - Investment in reviewing officers has instead focused on targeting work to help improve performance against statutory key performance indicators. 	2 (Achieved)	✓

	Recommendation	Where we are up to	Stage	Complete
13	<p>We recommend that the Director of Social Services and the Chief Executive of Education Leeds produce an action plan within three months for improving the education support to adopted children, in order to ensure a more consistent quality of experience for adoptive families. This should cover awareness raising for schools; social services staff awareness of education resources; and parental awareness of education support particularly for special educational needs.</p>	<p><u>July 2007 position</u> There is a piece of work currently being undertaken to develop practice in respect of the education of looked after children. The proposals regarding the education of adopted children will be similarly considered and added to the current piece of work. Timescale: April 2008</p> <p><u>October 2007 update</u> A 'virtual headteacher' for looked after children has been appointed and will consider this as part of his brief.</p> <p><u>July 2008</u> Work to improve education support to adopted children is ongoing. At present this has not been allocated as a key responsibility of the 'virtual headteacher', enabling him to focus specifically on looked after children.</p> <p>However, work to integrate the shared responsibilities of children and young people's social care with schools is developing, resulting in better mutual understanding and more targeted support to those young people with particular needs, including adopted children.</p> <p>For example:</p> <ul style="list-style-type: none"> - support staff regularly go into schools to observe, plan and provide training for the school in relation to individual children - Theraplay is used in schools - mentoring programme for looked after children successfully used with an excluded adopted child - annual multi-agency training (including CAMHS) is offered free to schools - ongoing support for adoptive parents from Education Support Worker 	2 (Achieved)	✓

	Recommendation	Where we are up to	Stage	Complete
3	<p>That the Director of Children's Services has regard to this report when responding to any school consulting on becoming a Trust School.</p> <p>In particular the points raised in this report regarding</p> <ul style="list-style-type: none"> proposed partner organisations sharing the same vision for the school any proposed changes to the school's admissions policy potential for the proposals to help or hinder "narrowing the gap" balance of trust appointed governors on the governing body <p>and to consider how the individual proposals will contribute to community cohesion and delivering the Every Child Matters agenda.</p>	<p><u>October 2007 position</u> Commitment given</p> <p>No further formal proposals received to date</p> <p><u>July 2008 Update</u></p> <p>All of the points highlighted by scrutiny are now incorporated into guidance used by Education Leeds in relation to trust schools. These points have also helped to inform the protocol in relation to Academies.</p> <p>Since the formal consultations on the Schools' Partnership Trust in Garforth, no further formal consultations have been held. However, groups of schools in Otley, Morley, Wetherby, Pudsey and Boston Spa have had informal conversations with Education Leeds. More formal responses to the considerations scrutiny has highlighted would be sought during any formal consultation.</p>	2 (Achieved)	✓

	Recommendation	Where we are up to	Stage	Complete
1	<p>In light of the evidence presented during our inquiry, we recommend that the youth offer for Leeds needs to address the following key findings:</p> <ul style="list-style-type: none"> • The need for a more equal distribution of universal youth services on offer across the city • The need to include advice and signposting within universal provision • The need to recognise that some groups of young people (for example carers, looked after children and young people with disabilities) may need a different approach or extra assistance to enable them to access the types of opportunities included in the universal youth offer • The need to recognise young people's expressed desires for venues and spaces to undertake their own (unstructured) activity • The important role of inter-generational/all age activities as well as specific young people's activities <p>We ask the Director of Children's Services to report to us within 3 months on how each of these issues will be addressed in the published youth offer.</p>	<p><u>January 2008 update</u> 972 young people were consulted during the summer about the contents of the draft youth offer. The results led to the production, by the Youth Council and ROAR, of an excellent DVD introducing the Breeze Youth Promise. The consultation highlighted the need to change some elements of the youth offer. This is being done at present, meaning that the Breeze Youth Promise can be finalised by the end of March. Leeds is recognised nationally as being the most advanced authority in the country regarding the youth offer.</p> <p><u>July 2008 Update</u> Updates have previously been provided around work on the specific elements of this recommendation.</p> <p>The Breeze Youth Promise is now finalised and is awaiting imminent sign-off from the Leeds Youth Council. It addresses points covered in this recommendation. It will be officially launched following this sign-off and a communications strategy will be agreed by young people to share it across the city.</p> <p>Approximately 30 young people have sustained involvement in this development, and a group has been formed which will be responsible over the longer term for the Breeze Youth Promise.</p>	<p>4 or 5 (not achieved)</p> <p>Board to determine whether progress is acceptable</p>	

	Recommendation	Where we are up to	Stage	Complete
6	That the Director of Children's Services finds ways of promoting positive relationships between the police and youth services more widely, building on the good examples that exist in some parts of the city.	<p><u>October 2007 position</u> The position remains that there are good local examples but no strategic discussions have as yet taken place. This would be a useful starting point and will be followed up.</p> <p><u>January 2008 update</u> This will be followed up once the Integrated Youth Support Service is in operation.</p> <p><u>July 2008 Update</u> Progress on this work has been good. There is a range of positive work and relationships taking place, with a good referral system from the police to the 'Positive Activities for Young People' scheme.</p>	2 (Achieved)	✓
	We recommend that the Director of Children's Services ensures that, in addition to existing consultation with service users, specific efforts are made to consult with non service users about their views on the Youth Service.	<p><u>October 2007 position</u> The Youth Service will be conducting its second annual user survey in October 2007. This is specifically designed to assess customer feedback and satisfaction ratings. Extensive public consultation with young people about the youth offer has been taking place during the summer as part of Breeze on Tour.</p> <p><u>January 2008 update</u> The annual user survey will now take place in February 2008.</p> <p><u>July 2008 Update</u> Reports from the user survey and a focus group with non service users have been circulated to members of the Scrutiny Board.</p>	2 (Achieved)	✓

	Recommendation	Where we are up to	Stage	Complete
2	That costs for departmental publications 2006/2007 be supplied to a future meeting of Scrutiny Board (Children's Services), to establish a baseline figure for departmental publications produced by Education Leeds for comparison with future years.	<p><u>July 2007 position</u> Comprehensive costs for 2006/07 not available Costs for 2007/08 being monitored Scrutiny Board agreed to this as an alternative. Review at end of 2007/08 financial year</p> <p><u>July 2008 Update</u> The figure is £124,572 and this is the baseline to be used.</p>	2 (Achieved)	✓
3	That the Director of Children's Services obtain costs for publications relating to Children's Services 2006/2007 from Council Departments and external partners, where available, to supply to a future meeting of Scrutiny Board (Children's Services).	<p><u>July 2007 position</u> Response indicated amount of work required to achieve recommendation. Board agreed that information would be sought from council departments only in the first place, for 2007/08 Review at end of 2007/08 financial year</p> <p><u>July 2008 Update</u> The figure across children's services excluding Education Leeds is £231,333. This is the baseline to be used. This includes: Breeze, The Project and Family Hub spending. Also Youth Services and Children and Young People's Social Care and cross-service publications/resources such as those relating to the Children and Young People's Plan and the Participation Strategy.</p>	2 (Achieved)	✓

Recommendation	Where we are up to	Stage	Complete
1 That First Bus review its fare structure so that the fare paid better matches the distance travelled. That First Bus review its fare structure in the light of the forum's findings on the barrier cost represents to young people. And, that First Bus report its conclusions/intentions to Scrutiny Board (Children's Services) in July 2007.	<p><u>July 2007 position</u> First has agreed to re-examine this issue when fares are next reviewed, although the scope for change may be limited.</p> <p><u>January 2008 update</u> The issue will be raised when the young people attend Metro's 'Operator meeting' on 4th March.</p> <p><u>July 2008 update</u> This was raised by young people at the Metro 'Operator Group' meeting on 13th May. The reasons for the current fare structure have been explained by First Bus.</p>	1 (Stop monitoring)	✓
2 That Metro should investigate the possibility of developing a concessionary scheme whereby young people pay for the first few journeys in the usual way and then get one/two free (buy four, get one free for example but avoiding the need to pay up front) and report their findings/actions to Scrutiny Board (Children's Services) in July 2007.	<p><u>July 2007 position</u> Metro has agreed to consider this approach.</p> <p><u>January 2008 update</u> This type of scheme is conditional on the introduction of smart cards. Metro will keep the Scrutiny Forum informed of progress in this area.</p> <p><u>July 2008 Update</u> Operators have agreed to a 'get around for a pound' promotion over the summer holiday, entitling all young people (11-16) with a half fare pass to a £1 ticket. Other work to take this forward is still ongoing.</p>	3, 4 or 5 (not achieved) Board to determine whether progress is acceptable	

Recommendation	Where we are up to	Stage	Complete
4 That Metro reviews the effectiveness of its marketing strategies with regard to young people's concessionary schemes and report its progress to Scrutiny Board (Children's Services) in July 2007.	<p><u>July 2007 position</u> Metro has offered to work with the Director of Children's Services on this issue.</p> <p><u>January 2008 update</u> Some progress has been made in this area. Metro now provide information to young people at key times in their lives eg. Age 11 and 16. A new website, www.generationm.co.uk has been launched and is proving successful.</p> <p><u>July 2008 update</u> Metro are continuing to develop their 'generation M' website, and are hoping to expand it to cover post-16 education as well as schools.</p>	2 (Achieved)	✓
5 That Metro develop a text messaging comments and complaints system, promote this amongst young people and report progress to Scrutiny Board (Children's Services) in July 2007.	<p><u>July 2007 position</u> Metro will consider this further following the launch of their young people's website</p> <p><u>January 2008 update</u> The website has now been launched and complaints/comments can be submitted by email. Metro are still considering the possibility of introducing a text message system at some point in the future.</p> <p><u>July 2008 update</u> Metro has requested a quote for setting up and running a text messaging service.</p>	4 or 5 (Not achieved) Board to determine whether progress is acceptable	

	Recommendation	Where we are up to	Stage	Complete
8	That the Director of Children's Services investigates adding travel concessions to the other benefits of the Breeze card and reports back to Scrutiny Board (Children's Services) in July 2007.	<p><u>July 2007 position</u> There are some technical issues that need to be addressed. Metro and Leeds City Council have agreed to closer joint working on publicity, events and discounts.</p> <p><u>January 2008 update</u> Investigations into this are ongoing. This scheme will also depend on the introduction of a smart card. Metro will keep the Scrutiny Forum informed of progress in this area.</p> <p><u>July 2008 Update</u> See recommendation 2. Operators have agreed to a 'get around for a pound' promotion over the summer holiday, entitling all young people (11-16) with a half fare pass to a £1 ticket. Other work to take this forward is still ongoing.</p>	<p>3, 4 or 5 (not achieved)</p> <p>Board to determine whether progress is acceptable</p>	

	Recommendation	Where we are up to	Stage	Complete
9	<p>That the Director of Children's Services orders a review of how school transport monies are being spent in Leeds to see if there is a better way in which it could be spent and reports back to Scrutiny Board (Children's Services) in July 2007.</p>	<p><u>July 2007 position</u> A review is taking place. Metro is developing a pathfinder bid for November 2007.</p> <p><u>January 2008 update</u> The School Transport Team within Education Leeds are involved in an ongoing review of transport costs and implications. This is set within the context of the statutory obligations that must be met under government legislation. The team has been liaising closely with Metro as part of this work, with a strong emphasis on taking forward the recommendations from the scrutiny review, particularly using the Breeze card to widen access to bus transport. Ongoing updates on this progress can be provided.</p> <p><u>July 2008 Update</u> A report will be submitted shortly to Executive Board prior to consultation during the autumn term on proposed changes to the Home to School Transport policy to take effect from September 2009. Part of the proposals are likely to incorporate amendments to the policy for support for children with additional transport needs (for example children with special educational needs) to reflect improved coordination between the policies previously administered separately by Education Leeds and Children and Young People's Social Care.</p>	<p>4 or 5 (not achieved)</p> <p>Board to determine whether progress is acceptable</p>	

	Recommendation	Where we are up to	Stage	Complete
1	That Education Leeds should always show a full analysis of the factors it has taken into consideration in its projections of demand for pupil places, and that it reports back to the Scrutiny Board within 3 months as to how this will be achieved, using Fountain Primary School as a particular example to demonstrate this.	<p><u>February 2008 position</u> In addition to utilising the existing systems which have proved to be robust during the closure and opening of almost 80 schools Education Leeds will develop a transparent system for reporting the demographic planning risks associated with a proposed school reorganisation. This could include for example the number of schools involved, their location in the city, the past reliability of projections in the area etc.</p> <p>An officer within the school organisation team has been identified to progress this work. The system for assessing risk will be reported to Scrutiny at its June meeting.</p> <p><u>July 2008 Update</u> To ensure a full, clear explanation is shown, Education Leeds is reviewing the information/explanation it uses to support its methodology.</p> <p>The revised information will be used for the updated pupil projections for schools, currently being completed by the School Organisation Team and due to be available on-line in the next two months.</p>	4 or 5 (not achieved) Board to determine whether progress is acceptable	
3	<p>That the Fountain Primary School building project be given priority and sufficient funding by Education Leeds and the Council.</p> <p>That a progress report relating to this project is reported back to Scrutiny within 3 months.</p>	<p><u>February 2008 position</u> Education Leeds, through its representation to Asset Management Group, has secured approval to access a capital receipt to be generated for the disposal of the current Fountain Infants Building. The receipt will be supplemented with an allocation from the Education Leeds Capital Programme and will provide the funding to extend the main building and bring the school onto one site. The scheme is currently in design and will be the subject of an Authority to Spend report to the Executive Board in March or April 2008.</p> <p><u>July 2008 Update</u> The proposals were agreed by the Executive Board in March 2008.</p>	2 (Achieved)	✓

	Recommendation	Where we are up to	Stage	Complete
9	<p>That the Governing Body of Fountain Primary School enters into early budgetary discussions with Education Leeds to review the school's current position so that any necessary further readjustments to class organisation and staffing structures are carried out with the least amount of disruption possible.</p>	<p><u>February 2008 position</u> Support continues to be provided through the school's link finance, HR, Team Leader of Financial Services and school improvement advisors. Detailed plans for managing staffing reductions are implemented and an acceptable revised financial recovery plan produced by the governing body.</p> <p>3 school visits by finance officer since 13/12/2007. 2 school visits by HR adviser since 14/12/2007 with 2 further visits planned during MSR process. 0 school visits by school improvement adviser. Meeting convened in December involving senior managers of Education Leeds, school representatives, and relevant elected members to consider full range of actions available to governors and appropriateness of support from Education Leeds.</p> <p><u>July 2008 Update</u> There is ongoing work with the school. Staffing reductions are achieved through to September 2009 without disruption to the work of the school.</p>	2 (Achieved)	✓

Report of the Director of Children's Services

Scrutiny Board (Children's Services)

Date: 17th July 2008

Subject: Children and Young People's Plan 2009: Consultation Process

Electoral Wards Affected: All

Specific Implications For:

Equality and Diversity

☐

Community Cohesion

☐

Narrowing the Gap

☐

1.0 Purpose of report

- 1.1 The purpose of this report is to explain to the Board the arrangements for developing the next Leeds Children and Young People's Plan, and to set out how the Board will be involved.

2.0 Background

- 2.1 The Children Act requires all Local Authorities to work with their local partners to develop a Children and Young People's Plan (CYPP). The purpose of this plan is to be the single, over-arching strategy which sets out how all local services will work together to improve the lives of children and young people.
- 2.2 The first Leeds CYPP was developed and approved in 2005-2006. The plan covers the years 2006-2009 and so is now in its final year. As such work is now underway to develop a new CYPP which will set out the overall strategy, key outcomes and improvement priorities for the next five years.

3.0 Arrangements for developing the plan

- 3.1 The arrangements for developing the new plan aim to involve all local services, partners and children and young people in line with the successful work in 2005 that involved thousands of children, young people, parents and frontline staff. This time this will be easier as it can build on existing arrangements and the valuable information gained in the recent CYPP Review and also the feedback from inspections in the Joint Area Review and Annual Performance Assessment.

3.2 The timescale for developing the plan is set out below:

- January – June 2008. CYPP Review – analysis on outcomes and progress to date. Consultation with partners, staff and Elected Members to inform review
- June – September 2008. Consultation for CYPP [See appendix A]. All partner agencies asked to provide input through existing forums and Boards.
- September - October 2008. Workshops with elected members, Children Leeds Partnership, Integrated Strategic Commissioning Board (ISCB) to agree key outcomes and improvement priorities.
- October 2008 – December 2008. Further development of plan. Emerging priorities used to inform budget, commissioning and operational planning. These in turn provide detail for action plans in CYPP.
- January 2009 – March 2009. Consultation and approval of CYPP. To include Scrutiny Board, Children Leeds Partnership, ISCB, Executive Board and Full Council.

3.3 A standard feedback form and consultation pack are available on the Children Leeds website. These are attached at appendix A and B respectively.

4.0 Recommendations

3.1 The Board is requested to:-

- (i) Agree to the proposed arrangements for involving the Board in developing the new CYPP.

Towards the Leeds Children and Young People's Plan 2009-2014

It is really important that everyone who wants to improve outcomes for children and young people in Leeds gets involved with the development of the Children and Young People's Plan 2009-2014 and this document explains how.

1. Summary

This page provides a brief background to inform discussion and preparation of the next Leeds Children and Young People's Plan.

This details:

- an assessment of current progress (paragraph 4);
- an overview of the changing context (paragraph 6);
- the process for how the plan will be developed (paragraph 7); and
- links to further information and contacts (paragraph 8).

2. Background

Since the Children Act, local authorities have a statutory duty to work with all their local partners to agree a Children and Young People's Plan (CYPP). The CYPP is intended to be the single, over-arching strategy for improving outcomes for children and young people. In Leeds the first CYPP was developed in 2005 and approved in 2006. That first three year plan runs until March 2009.

It is vital that, to develop the new CYPP, **everyone** who wants outcomes for children and young people to improve contributes, including for example;

- Parents
- Young People and Children
- Carers
- Governors, Headteachers and Teachers
- Service Managers
- Frontline Staff
- Strategic Managers
- People from the Voluntary, Community and Faith Sector

A **consultation/feedback form** is available by clicking [here](#) and we would urge you to complete this and to encourage your colleagues to do the same through discussion at any appropriate meetings, conferences or seminars you may attend.

3. Towards the new CYPP

Developing a new CYPP is a timely opportunity for us to take some time to reflect on where we are now, the progress we have made and the changing national and local context. We then need to use this learning to help us agree how best we can work together over the next few years to continue to improve the lives of the children and young people in Leeds. A new CYPP can then help provide a shared framework and focus for all partners in Children Leeds and help inform the work, planning and prioritisation of all.

To develop the new CYPP we will work within all parts of the Children's Trust Arrangements for example by; consulting through Open Forums and obtaining the

approval of the Partnership and Integrated Strategic Commissioning Board when key milestones are reached.

4. Where are we now?

Children and young people's outcomes are generally good and improving, and local children's services overall make a strong contribution to their success. Since the first CYPP in 2006 there has been significant progress on most of the agreed priorities and targets. Leeds has developed a distinctive local approach to children's services and has many examples of innovation and leading practice in providing support to children, young people and families. However, despite these many successes, challenges remain. The section below provides a brief overview:

More information is provided in these documents:

- [Children and Young People Plan review 2008](#)
- [Leeds Joint Area Review Report 2008](#)

<i>Outcome</i>	<i>Strengths</i>	<i>Areas for development</i>
<i>Be Healthy</i>	<ul style="list-style-type: none"> • Healthy schools • Promotion of sport and activity • Improvements in breastfeeding rates • Reducing waiting times for mental health and sexual health services 	<ul style="list-style-type: none"> • Reducing teenage conception rates • Reducing infant mortality rates
<i>Stay Safe</i>	<ul style="list-style-type: none"> • Some significant improvements in social care performance • Anti-Bullying strategy 	<ul style="list-style-type: none"> • Improving the quality and timeliness of key assessments and reviews • Reducing the proportion of children and young people in care
<i>Enjoy and Achieve</i>	<ul style="list-style-type: none"> • Improvements to GCSE results, particularly for targeted schools and groups • Improvements to learning outcomes in early years, quality of provision • Reductions in exclusions 	<ul style="list-style-type: none"> • Raising attendance in secondary schools, particularly reducing persistent absence • Reducing the proportion of pupils leaving schools with no qualifications
<i>Make a Positive Contribution</i>	<ul style="list-style-type: none"> • Participation in positive activities • Reductions in youth offending and re-offending • Arrangements for involving children and young people • Support for personal and social development in schools 	
<i>Achieve Economic Wellbeing</i>	<ul style="list-style-type: none"> • The range and quality of childcare support • Progress on regeneration and improving social housing 	<ul style="list-style-type: none"> • Raising the proportion of young people in learning or work post-16 • Raising qualification levels at age 19 • Reducing child poverty
<i>Narrowing the Gap</i>	<ul style="list-style-type: none"> • Outcomes and support for disabled children and young people • Improvements to GCSE results for some Black and Minority Ethnic Groups 	<ul style="list-style-type: none"> • Improving outcomes for Looked After Children and Young People • Improving outcomes for children and young people from deprived areas
<i>Service Management</i>	<ul style="list-style-type: none"> • Excellent progress in developing children's centres and extended services in schools • Good leadership and management overall 	<ul style="list-style-type: none"> • Locality integration • Develop shared systems and processes

For more information see the [2008 review of the Children and Young People's Plan](#)

5. Our current priorities

ECM Outcome	Updated Priority wording:
	All children and young people are...
Be Healthy	Active and eat healthily
	Happy and resilient
	Able to make healthy choices about sex and relationships
Stay Safe	Safe in their families and safe in care
	Safe in their communities
Enjoy and Achieve	In school and achieving
	Able to make a good start in learning
Positive Contribution	Engaged in positive activities
Economic Wellbeing	Succeeding in learning or work
Narrowing the Gap	Able to succeed, whatever the barriers
Service Management	Supported by excellent, integrated services

For more information see the [2008 review of the Children and Young People's Plan](#)

6. The changing context

The new CYPP needs to reflect the changing local and national context for children's services in Leeds. In particular it needs to show how we will achieve the agreed local and national targets for improving outcomes in the city. These are explained in the section below:

6.1. The 'Leeds Approach'

As children's services have developed in Leeds, a clearer broad approach to how the city will develop its strategy has been developed and shared.

- *Personalisation*: making sure that services and support are tailored to the ambitions, needs and circumstances of the individual child, young person or family or the community they live in.
- *Participation*: developing services and strategy *with* children, young people and families rather than imposing a model.
- *Partnership*: working together to agree and deliver on shared aims at all levels, from citywide strategy groups to local partnerships around schools and communities to front line teams.
- *Prevention*: working to identify problems early, respond quickly and appropriately to needs as they change to avoid problems becoming severe, and more difficult and costly to resolve.
- *Safeguarding*: Fundamental to achieving our aims is the need for building a culture of safeguarding in everything we do – to ensure we all work to make children and young people safe and to promote their wellbeing. Safeguarding is an essential part of everyone's responsibility across the partnership.
- *The Universal Offer*: developing an enhanced and extended entitlement for all children, young people and families to excellent, tailored support and services. The

Universal Offer ranges from learning to advice and guidance and from family support to positive activities.

- *Narrowing the Gap*: in addition to an enhanced offer for all, it is important that services also build their capacity for providing additional support for those who need it most. Leeds' Children's Services are focused on narrowing the gap for those with the most barriers to achieving good outcomes, particularly Looked After Children and disabled children and young people.
 - *Building resilience*: we know that to achieve our aims we need to build resilience – that is the ability of children and young people (as well as families and whole communities) to manage change and challenges effectively so they can thrive. Families and communities bring up children and local services can support them by “thinking family”.
 - *Aspiring to excellence*: we need high expectations for what children and young people can achieve, as well as excellence in the services that work for them.
 - *'Local leadership'*: local partners are central to our approach for delivering our change agenda. We want our services to be led locally, and for those staff and partners working closest with children, young people and families to have more control and lead the way forward.
- Further information is available in the [2008 review of the Children and Young People's Plan](#).

- *The National Agenda*

- Central government and the new Department for Children, Schools and Families (DCSF) have been developing new strategies and plans at considerable pace over the past year. The main documents are the DCSF Children's Plan but there is also a wider range of new plans, policies and strategies already released or planned on issues such as safeguarding, offending and children's health. The Leeds CYPP will need to set out our local response to these new directives and directions. The key developments include:
- *Parents and family*: the government is placing new emphasis on the role of parents and families, aiming to give them more support, advice and information, particularly for those facing the most challenges.
- *Social exclusion and poverty*: there is an additional emphasis on narrowing the gap and reducing inequality, and continued commitment to eliminating child poverty
- *Happy and healthy*: the Department for Children Schools and Families (DCSF) is placing much more importance on promoting play and wellbeing, reflecting their consultation with children and families.
- *Changes and continuity for schools*: the Children's Plan offers both a new emphasis on schools as a centre for extended services and partnership working whilst retaining a traditional focus on the standards agenda, heightened through the recent 'National Challenge' for secondary schools below floor targets.
- *'On the path to success'*: this new priority for the DCSF brings together a range of issues for teenagers, including drugs and alcohol, teenage pregnancy and anti-social behavior. The key response to this is developing targeted youth services for those most at risk.
- *Partnerships and governance*: the government remains concerned with changing the way local services work together, both within schools, in children's trusts and new regional arrangements for learning and skills.

- *Workforce development:* there is a wide national agenda aimed at supporting and changing the workforce in children's services, with a particular focus on developing common competencies and shared approaches across professions.

Further information is available in the:

- [Department of Children Schools and Families Children's Plan](#)
- [The new Every Child Matters Framework](#)
- [Next steps for the Children's Workforce Document](#)

6.2. Wider context

The new CYPP also needs to include a response to wider local and national factors, including:

- *Economic change:* the Comprehensive Spending Review in 2007 saw significant reductions in funding growth for local services. These changes, and the wider economic downturn, will require a stronger focus on efficiency and prioritisation.
- *Social and demographic change:* the population of Leeds has seen significant changes, in particular with a significant growth in the estimated overall population of the city to 750,000, and a major increase in the number of new migrant communities.

6.3. Local and national targets

The new CYPP will have to show our strategy for achieving the local and national targets set out for children's services. The Leeds Strategic Plan sets out targets for the city from 2008 to 2011 and the DCSF Children's Plan sets out ambitious 'Goals for 2020'. The main targets include:

6.4. Local targets including:

- Teenage conception
- Emotional health
- Numbers of Looked After Children and Young People
- Placements and reviews for Looked After Children
- Bullying
- Statutory Education Targets from Foundation Stage to GCSE, with additional targets for Looked After Children
- Statutory Education Targets for Persistent Absence and Attendance
- Qualifications at 19
- Availability of PE

6.5. National targets for 2020:

- 90% of young people achieving national achievement standards at Foundation Stage and Key Stage 2, 70% achieving the equivalent of A-Levels
- Child Poverty eradicated
- Obesity reduced to 2000 levels

More detail on the targets and current performance is available in the:

- [Department for Children Schools and Families Children's Plan](#)
- [2008 Review of the Children and Young People's Plan](#)

The Local Area Agreement Targets and final version of the Leeds Strategic Plan will also be available as soon as they are published.

7. Towards the new CYPP – next steps

7.1. The process for developing the new CYPP.

There will be an ongoing consultation process throughout the development of the new CYPP, this will begin in early July. As well as asking for the views of everyone across the Partnership and of children and young people, we will also draw from and build on information from a range of sources, for example the in depth work that has been done to develop the [2006 – 2009 Children and Young People's Plan](#) and it's [2008 annual review](#), the recent Joint Area Review preparation, [report](#) and action plan, the Needs Analysis, agreed targets and previous surveys and consultations.

7.2. Overall timelines

Month	Process
June	<ul style="list-style-type: none"> • The process for developing outline priorities is initiated
July	<ul style="list-style-type: none"> • Consultation with partners across the city begins
August	<ul style="list-style-type: none"> • Consultation with partners across the city continues
September	<ul style="list-style-type: none"> • First stage of the on going consultation process completed by 30th September • Consultation to develop priorities with children and young people, to be undertaken during September
October	<ul style="list-style-type: none"> • Priorities agreed and consulted on through the Children Leeds Partnership • Priorities to inform budget and commissioning processes • Six Month Review of progress against 2008 CYPP review
November	<ul style="list-style-type: none"> • Detail on key actions and targets developed • Draft plan published for consultation
December	<ul style="list-style-type: none"> • By mid December the consultation on the draft CYPP (2009 – 14) will be complete
January	<ul style="list-style-type: none"> • Final Draft of the CYPP (2009 – 14) completed
February	<ul style="list-style-type: none"> • CYPP (2009 – 14) approved by Children Leeds Partnership and the Integrated Strategic Commissioning Board
March	<ul style="list-style-type: none"> • CYPP approved by Leeds City Council's Executive Board.

7.3. Consultation

We would like as wide a range of people and groups from across Children Leeds to be involved in developing the new Children and Young People's Plan. Please complete the [feedback form](#) and return it to children.leeds@leeds.gov.uk by 30th September 2008.

8. Contacts

For more information please contact Leigh Walker at:

children.leeds@leeds.gov.uk

Or telephone:

(0113) 22 43965

Or go to www.childrenleeds.org.uk

**Thank you for your participation in the review process.
Your views are important.**

Priorities for the Children and Young People's Plan (CYPP) for 2009 - 2014

1) Your details

Name	
Organisation	

2) Progress against the CYPP - 2006 to 2009

2a) What are the successes of the last three years and what can we learn from this?

--

2b) What are the main challenges that we still face?

--

3) Priorities and plans for the next year

3a) CYPP priorities for 2009 - 2014

What do you think our five key priorities should be for the next five years? Please give a brief explanation as to why you think these issues are important.

3b) What are the big changes that we need to make to achieve these priorities?

4) Further comments

Please use this section to provide any additional information or comments that will assist with the development of the priorities for the new Children and Young People's Plan.

Thank you for taking the time to complete this form. Please return the form to children.leeds@leeds.gov.uk or to CYPP 2009, 6th Floor East Merrion House, 110 Merrion Centre, Leeds, LS2 8DT

Originator: Kate Arscott

Tel: 247 4189

Report of the Head of Scrutiny and Member Development

Scrutiny Board (Children's Services)

Date: 17 July 2008

Subject: Work Programme

Electoral Wards Affected:

Specific Implications For:

Equality and Diversity ☐

Community Cohesion ☐

Narrowing the Gap ☐

1.0 Introduction

- 1.1 A copy of the board's draft work programme is attached for members' consideration (appendix 1).
- 1.2 The attached chart reflects the discussions at the board's June meeting, and potential items identified during 2007/08. In relation to each issue, a proposal has been set out. These proposals are then reflected in the draft work programme which follows.
- 1.3 The board is asked to consider which issues should be taken forward through the year, bearing in mind the need to create a manageable programme of work.

2.0 Recommendation

- 2.1 The board is requested to agree the attached work programme subject to any decisions made at today's meeting.

This page is intentionally left blank

Scrutiny Board (Children's Services)
Draft Work Programme 2008/09

Item	Description	Suggestion	Type of item
Possible items for 2008/09 work programme from 2007/08			
Teenage Conception	<p>The Scrutiny Board (Health and Adult Social Care) published a Statement from the Teenage Pregnancy Working Group in April 2008.</p> <p>It recommends that further scrutiny, in the form of a full inquiry, be carried out into teenage conceptions during the municipal year 2008/09.</p>	<p>Propose that Scrutiny Board (Health) is the most appropriate Board to lead on this inquiry.</p> <p>Suggest that the Health Board is asked to consider co-opting one or two Children's Services Board Members to join the Inquiry.</p>	
Education Standards	<p>Last year the Board made a strong recommendation that an inquiry is prioritised in 2008/09 on those entering the education system.</p>	<p>Propose that the Board considers whether this is still a priority area for an inquiry. If it is, a working group could be set up to scope the inquiry over the summer period and bring draft terms of reference to the Board meeting in September.</p>	
Possible items for 2007/08 work programme from June meeting			
14-19 education	<p>A number of issues were raised as potential topics, including:</p> <ul style="list-style-type: none"> • 14-19 curriculum • Diplomas • Reorganisation of post-16 education • 14-19 review and provision for pupils with learning difficulties and disabilities 	<p>Propose that the Board carries out a further inquiry on progress with the 14-19 agenda.</p> <p>A working group could be set up to scope the inquiry over the summer period and bring draft terms of reference to the Board meeting in September.</p>	
Commissioning	<p>This was raised especially in relation to the voluntary, community and faith sector.</p>	<p>Propose a briefing paper in the first instance to the September meeting on the current arrangements for commissioning through Children Leeds.</p>	

Scrutiny Board (Children's Services)
Draft Work Programme 2008/09

Item	Description	Notes	Type of item
Attendance	A number of linked issues were raised, including: <ul style="list-style-type: none"> • Attendance • Early identification of pupils who may become NEET (not in education, employment or training) • Children missing from education • Achievement of looked after children 	These could be linked as an inquiry or working group topic.	
Transport		Consider further in the light of the response to recommendation 9 of the inquiry into 'services for 8-13 year olds' due in September, and the outcome of the current internal audit review.	
'National Challenge' programme	This is the government's programme for secondary schools which do not meet the national floor targets	Potential working group issue Suggest that the Leeds response is tracked as part of the quarterly overview reporting by the Director of Children's Services.	
Community Cohesion	This was linked to extended services work.	Also links to 14-19 education item above. The Board has looked at extended services extensively as part of its inquiries into 'youth services' and 'services for 8-13 year olds' over the past two years. Suggest that the Environment and Neighbourhoods Board is asked to consider co-opting a Children's Services Board Member in relation to any work that Board undertakes on community cohesion.	

Scrutiny Board (Children's Services)
Draft Work Programme 2008/09

Item	Description	Notes	Type of item
Meeting date – 18 September 2008			
Formal responses to Scrutiny Board recommendations	To receive the formal response to the following final inquiry report: <ul style="list-style-type: none"> Services for 8-13 year olds 		MSR
Commissioning	To receive a briefing paper on the current arrangements for commissioning through Children Leeds	This was raised especially in relation to the role of the voluntary, community and faith sector	B
Terms of Reference	To agree the terms of reference for the Board's main inquiries	Subject to confirmation of the chosen topics in July 2008.	
Meeting date – 16 October 2008			
Performance Management	Quarter 1 information for 2008/09 (April - June)	All Scrutiny Boards receive performance information on a quarterly basis	PM
Children's Services and the Children and Young People's Plan	To maintain an overview across the Board's portfolio, and to monitor the development of the Children's Services arrangements in Leeds	The Board has agreed to monitor progress against the priorities in the Plan on a quarterly basis	PM
Recommendation Tracking	This item track progress with previous Scrutiny recommendations on a quarterly basis		MSR
Ofsted Inspections	Biannual update on Ofsted Inspections and schools causing concern	The Scrutiny Board agreed in 2006/07 to consider these reports to Executive Board	PM

Scrutiny Board (Children's Services)
Draft Work Programme 2008/09

Item	Description	Notes	Type of item
Meeting date – 13 November 2008			
Inquiry One	To receive evidence as the first session of the Board's Inquiry		
Meeting date – 11 December 2008			
Inquiry Two	To receive evidence as the first session of the Board's Inquiry		
Meeting date – 8 January 2009			
Performance Management	Quarter 2 information for 2008/09 (July-Sept)	All Scrutiny Boards receive performance information on a quarterly basis	PM
Children's Services and the Children and Young People's Plan	To maintain an overview across the Board's portfolio, and to monitor the development of the Children's Services arrangements in Leeds	The Board has agreed to monitor progress against the priorities in the Plan on a quarterly basis	PM
Recommendation Tracking	This item track progress with previous Scrutiny recommendations on a quarterly basis		MSR
Meeting date – 5 February 2009			
Inquiry One	To receive evidence as the second session of the Board's inquiry		

**Scrutiny Board (Children's Services)
Draft Work Programme 2008/09**

Item	Description	Notes	Type of item
Meeting date – 5 March 2009			
Inquiry Two	To receive evidence as the second session of the Board's Inquiry		
Meeting date – 2 April 2009			
Performance Management	Quarter 3 information for 2008/09 (Oct-Dec)	All Scrutiny Boards receive performance information on a quarterly basis	PM
Children's Services and the Children and Young People's Plan	To maintain an overview across the Board's portfolio, and to monitor the development of the Children's Services arrangements in Leeds	The Board has agreed to monitor progress against the priorities in the Plan on a quarterly basis	PM
Recommendation Tracking	This item track progress with previous Scrutiny recommendations on a quarterly basis		MSR
School performance and Ofsted Inspections	Annual report on school performance and biannual update on Ofsted Inspections and schools causing concern	The Scrutiny Board agreed in 2006/07 to consider these reports to Executive Board	PM
Annual Report	To agree the Board's contribution to the annual scrutiny report		

Key:

RFS – Request for scrutiny
 RP – Review of existing policy
 DP – Development of new policy
 MSR – Monitoring scrutiny recommendations
 PM – Performance management
 B – Briefings (including potential areas for scrutiny)

Scrutiny Board (Children's Services)
Draft Work Programme 2008/09

Working Groups			
Working group	Membership	Progress update	Dates
Young People's Scrutiny Forum – Protecting our Environment	Members of Leeds Youth Council and ROAR	Terms of reference agreed April 2008 Currently taking evidence	